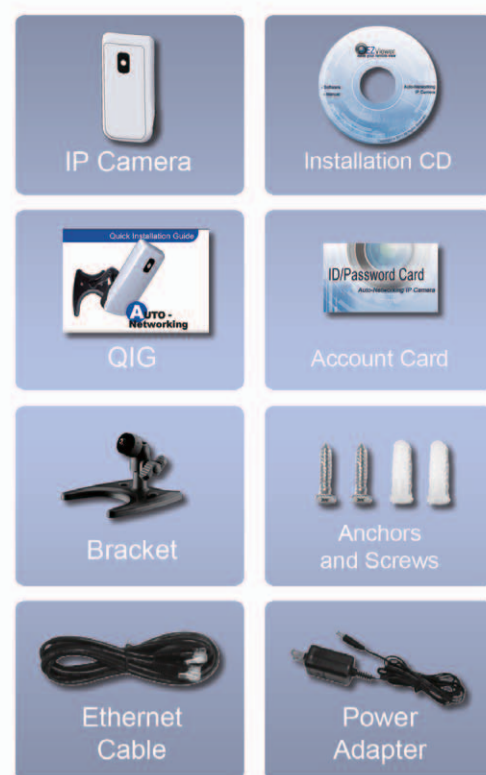
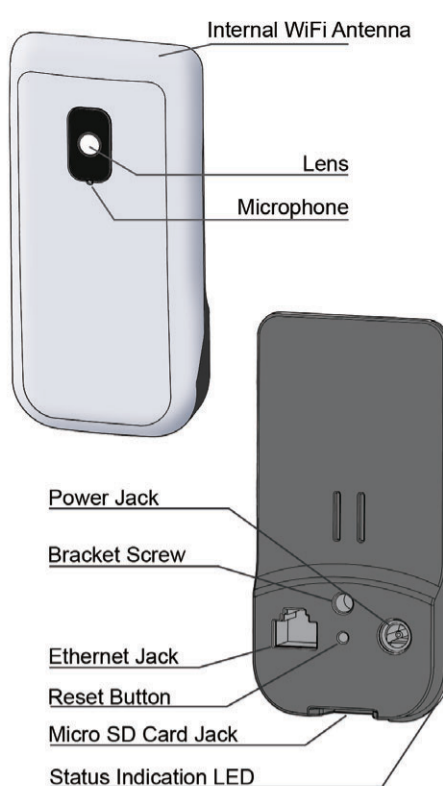


Quick Installation Guide

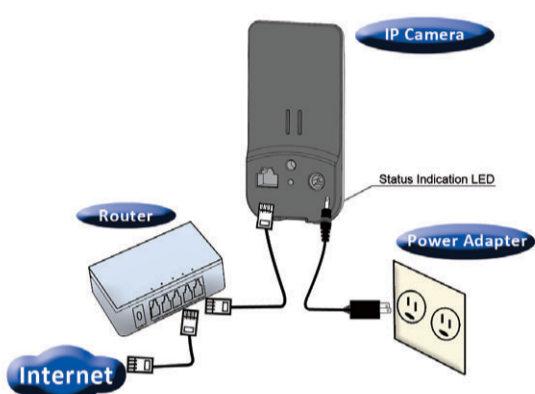


AUTO Networking IP CAMERA

www.ness.com.au Part No. 104-477



STEP 1 IP Camera Installation



1 Make sure you correctly plug in the power adapter and the ethernet cable. The IP Camera will get an IP address from your Router automatically. (DHCP must be enabled on the router). The diagram left shows you how to connect the device correctly.

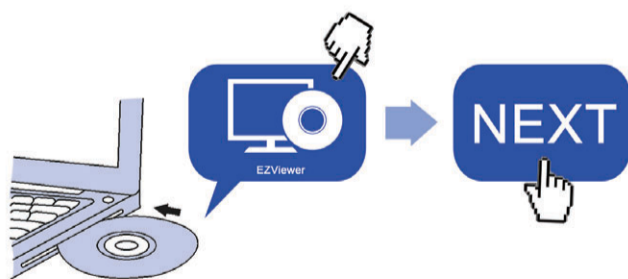
2 Check the LED of IP Camera to see if IP Camera is correctly connected. Constant blue light means that IP Camera is working fine. Then, you can install the EZViewer (video management software). Otherwise, go back to step 1 and check the connections. If the LED is still blinking, contact your retailer.

Constant blue light means that IP Camera is working fine. Then, you can install the EZViewer (video management software). Otherwise, go back to step 1 and check the connections. If the LED is still blinking, contact your retailer.

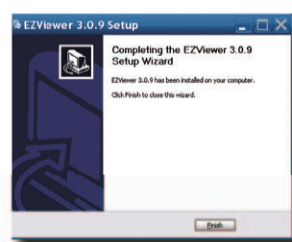
STEP 2 EZViewer Software Installation

1 Before installing EZViewer on your PC or laptop, please make sure you have correctly installed the IP Camera. It's highly recommended that you close other Windows applications to avoid possible conflicts.

2 Insert the installation CD into your CD-ROM driver and find the EZViewer.exe application. Double click on it and follow the installation instructions on screen.



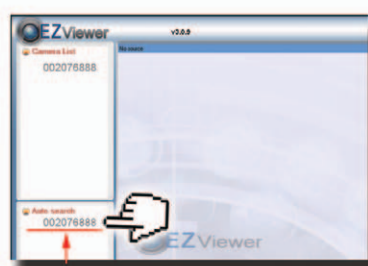
3 The "Completing the EZViewer Setup Wizard" should be displayed if everything is correct. If not, re-install it.



STEP 3 EZViewer Software Usage

1 Start the EZViewer application from either Start->Programs->EZViewer->EZViewer or the shortcut on the desktop of the Microsoft Windows.

2 Once the EZViewer starts, it will automatically search for all IP Cameras on your Local Area Network. The Cam ID of IP Cameras found is displayed in "Auto Search".



Note To save the found Cam ID on your PC, simply drag it from "Auto Search" folder to "Camera List".

3 To view the video, simply double-click on the Cam ID which you want to see or drag the Cam ID to one of the video play windows.



Note 1. If the Camera you want to see is outside of your LAN and the Cam ID is not in the "Camera List", please right-click on the "Camera List", choose "New Camera" and enter the Cam ID and password.
2. For further operation, please refer to the full-version user manual of EZViewer.

Wireless Setting (for wireless model)

1 Please make sure the Ethernet cable is connected to the IP Camera.

2 Start the EZViewer. In the "Auto Search" folder, right-click on the Cam ID of the IP Cam that you want to configure. Click "Web Configure" to open the browser.



3 Key in the admin account and password to enter the web page of the IP Camera.

Note The default username is "admin" and the password is empty.



4 Click "WiFi Security" in the menu items to see the current WiFi settings.

5 To enable the WiFi function, enter the SSID of your wireless AP (router), choose the security mode and enter the encryption key according to the settings of your wireless AP.

6 Click "Save & Apply" to save the configuration.



7 To test your WiFi settings, go to the "WiFi security" page and click "WiFi test". Wait for about 15 seconds, the result will be displayed. If it fails, please double check your WiFi settings.



Note DO NOT unplug the ethernet cable during WiFi testing!



8 Now you are ready to activate the wireless connection by unplugging the Ethernet cable from the IP Camera.

Note The WiFi connection is disabled while the ethernet cable remains plugged in to the IP Camera.

